



Australian  
Sewing Guild Ltd



Sharing and furthering the art of sewing



Finished size approx. 2 ¾" (7 cm square)

## EARRING POUCH

A quick to sew and truly scrap busting project. This diminutive portfolio has 5 pockets and is perfect for storing jewellery when travelling.

Measurements can be customised if you want to make larger envelopes.



The envelope consists of 3 fabric rectangles and a piece of fusible batting to protect contents.

Choose three coordinating fabrics: pocket insert, lining, and exterior. Quilting cotton or other lightweight, stable fabrics are best.

**Pocket insert:** 10½ inches x 8¾ inches (26 cm x 22 cm)

**Lining:** 8 inches x 3½ inches (20 cm x 9 cm)

**Exterior:** 8 inches x 3½ inches (20 cm x 9 cm)

**Medium-weight interfacing:** 8 inches x 3½ inches (20 cm x 9 cm) Fuse to wrong side of exterior

**Ribbon:** 3¾ inches (9.5 cm) Choose a ribbon or trim that's about ½ inch wide (12 mm).

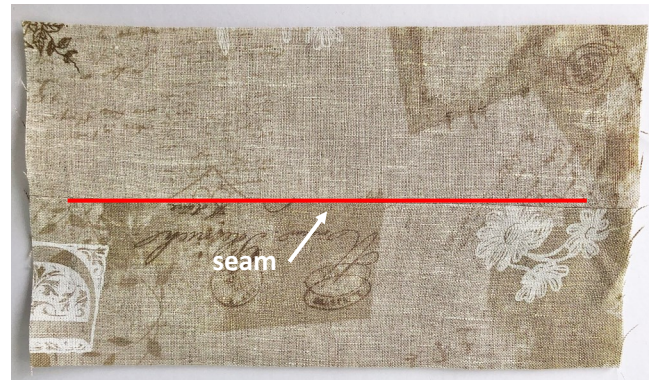
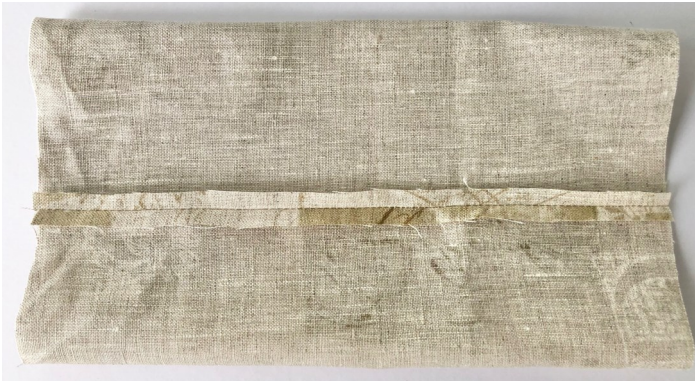


## Prepare the pocket insert

Clever folding turns a fabric tube into a series of pleated pockets. **All seam allowances are 1/4 inch wide (6 mm).**

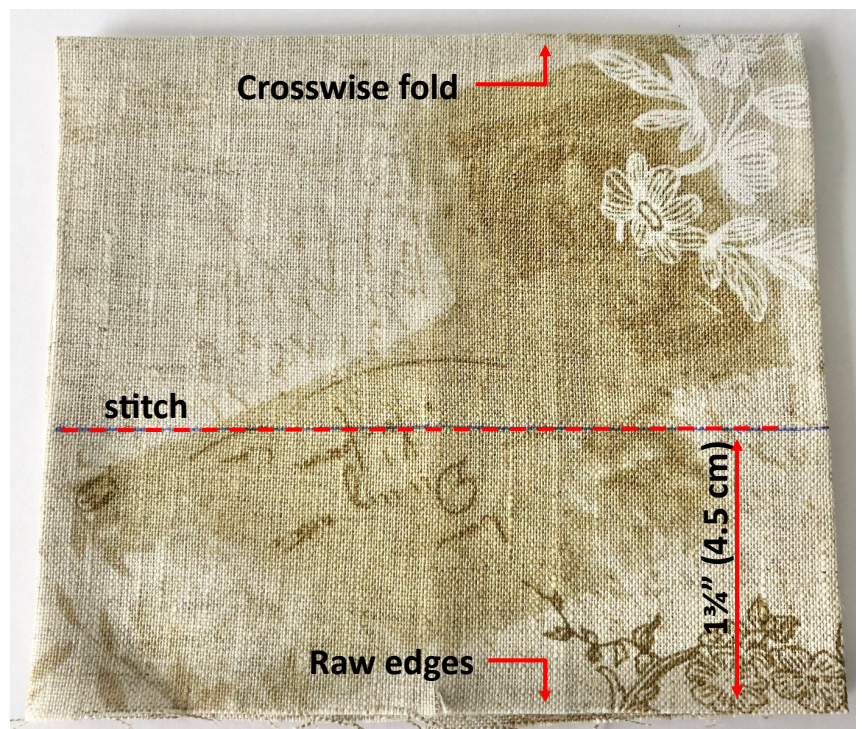
### 1. Create a fabric tube

With right sides together, fold the pocket insert piece to align the two short ( $8\frac{3}{4}$ " ) edges. Sew to form a tube, and press the seam open. Turn the tube right side out, centering the seam on one side. Press the tube flat.

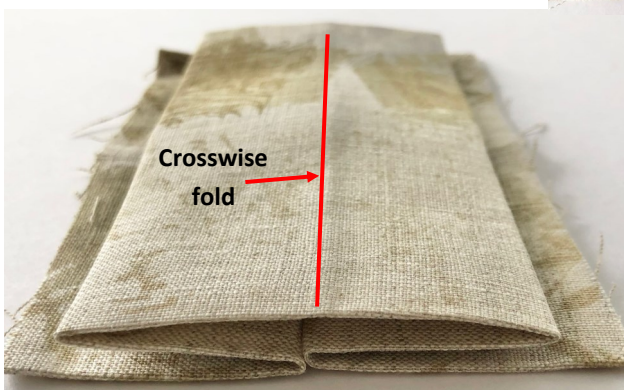


### 2. Fold the tube in half crosswise

Make sure the seam stitched in Step 1 is on the inside and the raw edges are aligned. Draw a line parallel to and  $1\frac{3}{4}$  inches (4.5 cm) from the raw edges. Stitch along the marked line.



### 3. Separate the raw edges



Pull them apart and centre the tube's crosswise fold on the seam you just sewed. Press the work flat.

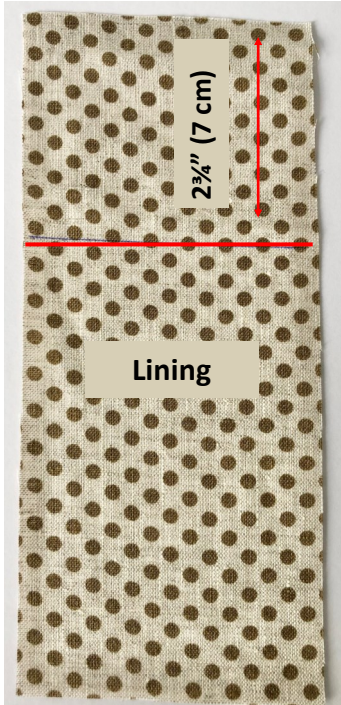


## Assemble the envelope

Attach the pocket insert, then join the exterior and lining layers.

### 1. Mark the pocket insert

Draw a line, perpendicular to the folded edges of the pocket, to mark the horizontal centre.



### 2. Mark the lining

The lining piece is the rectangle without the fusible interfacing. Draw a line 2 3/4 inches from one short edge.

### 3. Attach the pocket insert to the lining

Place the lining piece right side up and position the pocket insert on top. Match the line drawn on the pocket insert with the line drawn on the lining. Stitch through all layers along the line.



### 4. Attach the ribbon to the exterior

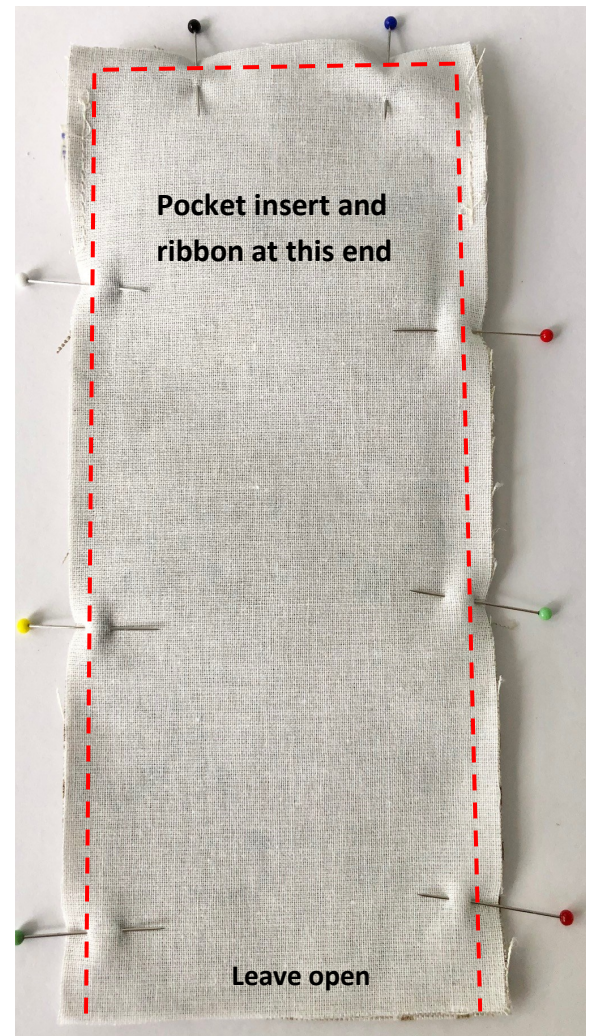
The exterior piece is the one with the fusible interfacing. Draw a line 3/4" (2 cm) from one short end. Lay the ribbon so the top edge is along this placement line. Pin the ends of the ribbon, aligning them with the edge of the exterior. The ribbon will not lie flat. Tack the ends in place.





## 5. Join the exterior and the lining

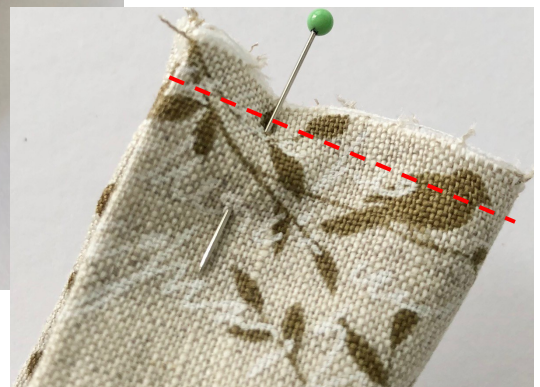
With right sides together, pin the lining to the exterior piece. **Make sure the pocket insert and the ribbon are at the same end.** Stitch around 3 edges, catching the pocket insert sides and the ribbon ends in the seams. When stitching across the short edge, be sure not to catch the pocket insert in this seam. Leave the remaining short end open.



Trim the seam allowance corners, turn the work through the open end, and press it flat.

## 6. Sew the flap point

At the end that is open, fold in half with the **lining sides together**. Sew together with a  $\frac{1}{4}$ " (6 mm) seam.





## 7. Complete the flap point

Press the seam open; clip into the fold to flatten the seam allowances thoroughly. Turn the flap point so the lining shows on the exterior. Press, then edgestitch to secure the flap edge.



## 8. Slipstitch the pockets

Fold the envelope closed to align the inner pocket side folds, then slipstitch them together. This forms the five pockets.

