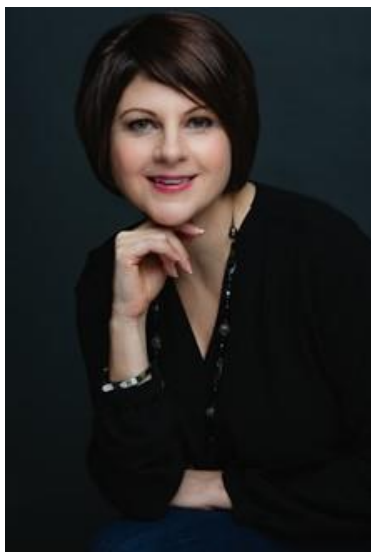


You're invited to ASG's online event

# AUTUMN SEWING CELEBRATION



## **In-House Patterns - Alexandra Morgan**

### **Three Ways to Determine Your Cup Size**

Learn the theory behind cup sizing along with three different ways to determine personal cup size.

### **The Armhole/Sleeve Connection: How to Determine Sleeve Fit Before You Sew**

Learn how to assess the fit of the sleeve pattern by studying its relationship with the armhole it will be stitched to. Learn how each part of the sleeve relates to the armhole, how to calculate the best armhole girth for their personal bicep girth measurement and what cap height will work best for the resulting girth measurement.

Alexandra Morgan holds a Bachelor of Science in Home Economics, with a major in clothing and textiles as well as a Bachelor of Applied Arts in Fashion Design. After working in the fashion industry as a pattern maker and fit technician for over twenty years, Alexandra founded In-House Patterns and began teaching in-person and on-line apparel development courses and workshops.

Website: <https://www.inhousepatternsstudio.com/>

Instagram: <https://www.instagram.com/inhousepatterns>

Facebook: <https://www.facebook.com/InHousePatterns>

Free Facebook Group: <https://www.facebook.com/groups/inhousepatternsstudio>